





Clive Road, Redditch, B97 4BE

£130,000

🛏 2 🚿 2 🛋 1



A neatly presented two bedroom ground floor apartment offered with an open plan kitchen/diner/lounge, bathroom, en-suite to the master bedroom, allocated parking and situated with neatly maintained, gated communal grounds in the popular location of Enfield, Redditch. **\*\*No Onward Chain\*\***

Lease Information:

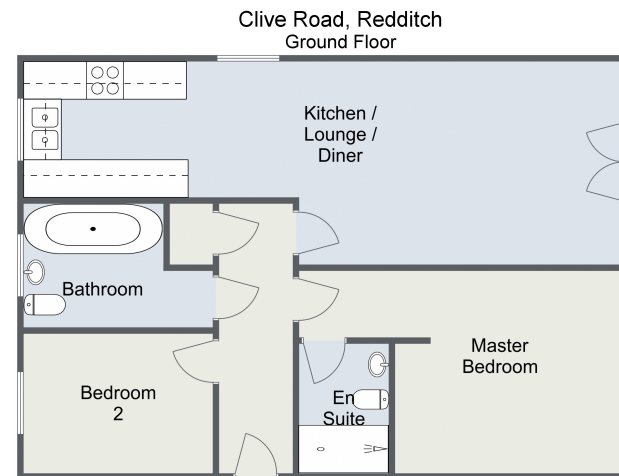
Approx. 107 Years Remaining on Lease

Service Charge - TBC

Ground Rent - £200 PA

EPC - C





Total Area Approx  
63.1 sq m  
679.2 sq ft

For illustrative purposes only. Decorative finishes, fixtures & fittings do not represent the current state of the property. Measurements are approximate & not to scale. Floor Plans made using RoomSketcher.



08/02/2023, 13:38

Energy performance certificate (EPC) - Find an energy certificate - GOV.UK

Energy performance certificate (EPC)		
Apartment 10 Prospect View Clive Road REDDITCH B17 4BE	Energy rating <b>C</b>	Valid until: 28 January 2030 Certificate number: 8000-6015-5323-5126-4903
Property type		Ground-floor flat
Total floor area		63 square metres
<b>Rules on letting this property</b>		
Properties can be let if they have an energy rating from A to E.		
You can read <a href="https://www.gov.uk/guidance/landlords-on-the-requirements-and-exemptions">guidance for landlords on the regulations and exemptions</a> ( <a href="https://www.gov.uk/guidance/landlords-on-the-requirements-and-exemptions">https://www.gov.uk/guidance/landlords-on-the-requirements-and-exemptions</a> ).		

<https://find-energy-certificate.service.gov.uk/energy-certificate/8000-6015-5323-5126-4903/printout>

1/6

For more information on this house or to arrange a viewing please call the office on:

**01527 540 654**

Alternatively, you can scan the QR to view all of the details of this property online.



**arden**  
ESTATE AGENTS